

# ACOUSTIC ROOM S acoustic furniture



## FEATURES

- Enhanced ergonomic and comfort
- Advanced lighting and ventilation
- Excellent Sound absorption and insulation
- Design and wide customization possibilities

## TECHNICAL INFORMATION



### External walls (5 panels upholstered with fabric) (1)

- Welded frame made of metal tube 40x20 mm;
- Angular brackets made of metal tube 40x40 mm;
- Powder coated metal;
- Height levelling feet (+30 mm);
- Made of 12 mm MFC;
- Covered with VB2240 foam (3 mm);
- Upholstered with fabric.

### External walls (1 solid panel from melamine) (1)

- Welded frame made of metal tube 40x20 mm;
- Angular brackets made of metal tube 40x40 mm;
- Powder coated metal;
- Height levelling feet (+30 mm);
- Made of 16 mm MFC with 1 mm ABS edging.

### Internal acoustic walls (5 panels upholstered with fabric) (2)

- Frame made of metal tube 40x20 mm;
- Powder coated metal;
- Made of 12 mm MFC;
- Acoustic foam (40 mm);
- Upholstered with fabric.

### Internal front walls (5 panels upholstered with fabric) (3)

- Frame made of metal tube 40x20 mm;
- Powder coated metal;
- Made of 12 mm MFC;
- Covered with VB2240 foam (3 mm);
- Upholstered with fabric.

### Internal front walls (1 solid panel from melamine) (3)

- Frame made of metal tube 40x20 mm;
- Powder coated metal;
- Made of 16 mm MFC with 1 mm ABS edging.

### Internal front central wall (with air injection system and control unit) (4)

- Top front panel is made of 16 mm MFC with 1 mm ABS edging;
- Bottom front panel with hinges is made of 16 mm MFC with 1 mm ABS edging;
- Sides and internal construction parts made of 16 mm MFC with 0,5 mm ABS edging;
- Ventilation and lighting dimming knobs are made of PA 2200 (Nylon);
- Vent covers made of metal sheet (1,5 mm and 0,5 mm);
- Powder coated metal.

### Table (without leg) (5)

- Tabletop is made of 16 mm MFC with 1 mm ABS edging;
- Box underneath the tabletop is made of 16 mm MFC with 1 mm ABS edging;
- Bracket made of metal tube 40x20 mm;
- Powder coated metal;
- Mounted 1 AC power socket (100-240 V) with or without integrated USB fast charger (USB Type A+C, max 5,6A).

### Ceiling (with air extraction system and LED light) (6)

- Ceiling panel is made of 16 mm MFC with 1 mm ABS edging;
- PIR sensor mounted in to ceiling panel;
- Air extraction box made of 16 mm MFC with 0,5 mm ABS edging and metal tube 40x20;
- Vent covers made of metal sheet (1,5 mm);
- Powder coated metal;
- Air extraction box inside top glued with acoustic foam (PV5010).

### Lighting (7)

- 3xLED module (8,8W) colour temperature approx. 3000 K, dimmable;
- 2xLED housing (asymmetrical) made of aluminium;
- 1xLED housing (symmetrical) made of aluminium;
- LED module replacement can only be purchased from manufacturer.

### Ventilation (8)

- 2x air supply fans located in bottom of internal front central wall;
- 2x air extraction fans located in ceilings;
- Maximum airflow approx. 200 m<sup>3</sup>/h;
- Fan noise level at maximum airflow up to 28,1 dB (A) (1pcs).

### Doors (L/R) (9)

- Metal door frame made of 40x40 mm tube and 40x8 mm steel rod;
- Powder coated metal;
- Bottom of door frame covered with stainless steel profile;
- Aluminium profiles with PVC sealing fixed to internal sides and top of door frame;
- Front sides and top of the metal frame, covered with 16 mm MFC with 1 mm ABS edging;
- 8 mm TSG (tempered safety glass), clear.

### Control box

- Input (GST18i3 male): 100-240 V;
- Frequency: 50/60 Hz;
- Power cable: EU, UK, FR, CH, US – GST18i3 female, 3 meters;
- Power consumption – 70W, standby 3W;

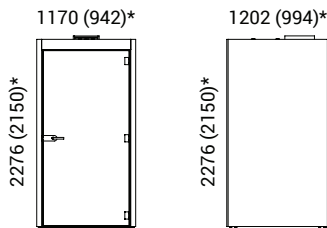
## GUARANTEE

- 5 years, except the electrical parts (2 years)

## RANGE

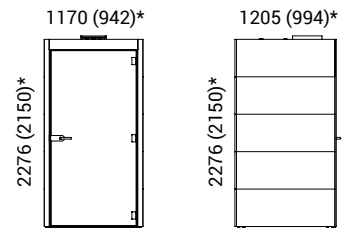
Melamine version

Product weight:  
302 kg.



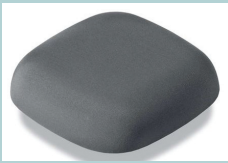
Fabric version

Product weight:  
292 kg.



\*External dimension (internal dimension)

### Optional



Autonomous smoke alarm device



Smoke alarm device for alarm system

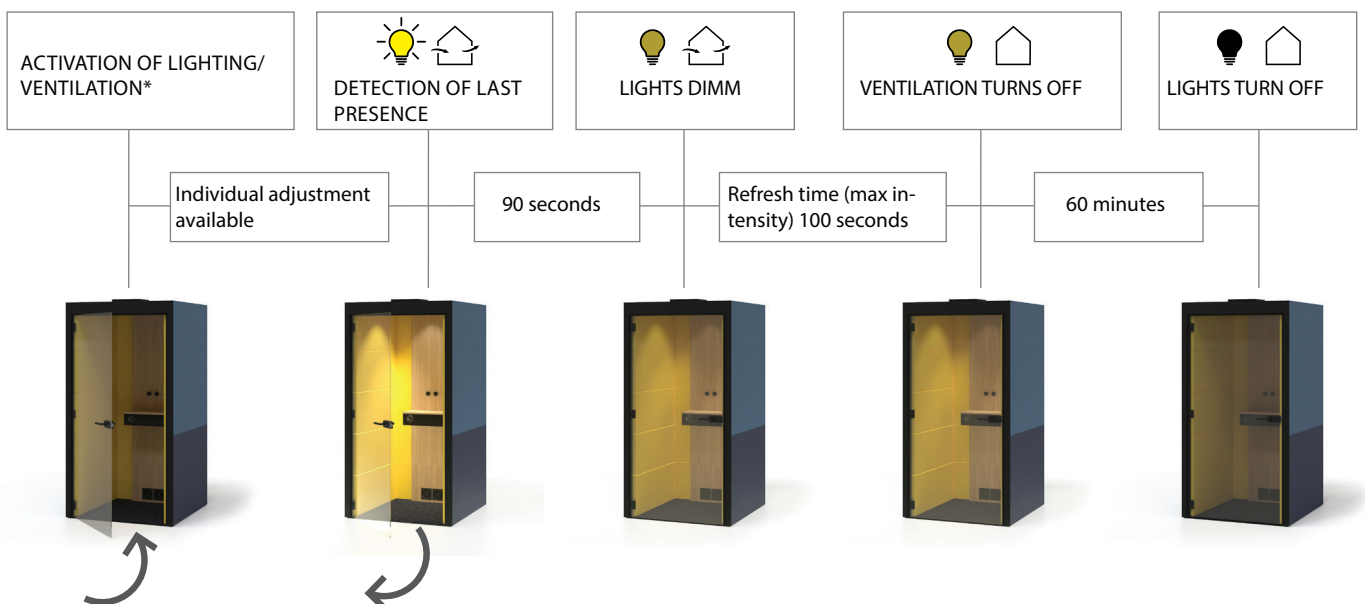


Dark grey carpet for 1 person\*\*

\*\*Highly recommended when AACOUSTIC ROOM is placed on the hard flooring

## ADDITIONAL INFORMATION

### AUTOMATIC OPERATION



\*Lighting/ventilation always starts in DEFAULT level